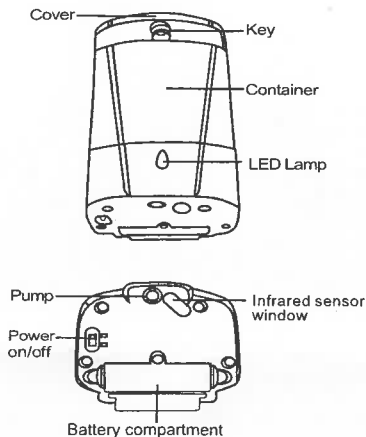


# AUTOMATIC SOAP DISPENSER

## User Manual

### FUNTION INSTRUCTION



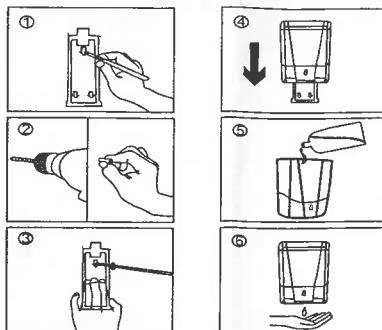
### SPECIFICATION

MODEL	X-5502
OUTER SIZE	L110*W100*H165MM
CAPACITY	700ml
DROP VOLUME	0.8-1ml
WEIGHT	480g
MATERIAL	ABS、AS
BATTERY	4X1.5V "AA"

### TECINO- PARAMETER

ELECTRICAL SOURCE VOLTAGE	DC6V
STATIC CURRENT	60UA
WORKING CURRENT	200MA
POWER	4W
EFFECT DISTANCE	0-10CM

### INSTALLATION SHOW



### FEATURES & INSTALLATION NOTES

1. Do not install the dispenser above the Mirror surface or above flowing water.
2. Do not install the dispenser with less than 2 inch (50cm) height beneath the table.
3. The sensor is at the base of dispenser. The effect range is from 0-10cm underneath the sensor.
4. The product is design for indoor use only. Direct sunlight or exposed locations can destroy the infrared sensor of the product.
5. Low voltage indicator when you find LED light twinkle continually while dispenser on standby mode, battery replace is necessary.
6. Do not use the alcohol or other chemistry liquid.
7. This product doesn't have waterproof function, please place product far from dampness.

### INSTALLATION AND USE

1. Use the mounting plate as a template to mark the Position.
2. Drill two 5mm holes and insert plugs into the holes. (Figure 2)
3. Fasten the mounting plate on the wall with the provided screws. (Figure 3)
4. Slide the dispenser in the mounting plate (Figure 4)
5. Insert 4pcs batteries into battery compartment

with proper polarity as shown on compartment. (Alkaline battery is recommended).

6. Open the cover and fill in the liquid to the container (Figure 5)
7. Put your hand under the sensor 0-10cm, and let the dispenser to start working for continuously until liquid soap come out from nozzle (figure 6). (When you use dispenser at first time, there was some air in the pump, you need work dispenser several times until liquid soap drop down.)

### IF DISPENSER DOESN'T WORK

1. Check the battery whether the power use up or not at the right polarity.
2. Power switch not open.

### IF DISPENSER DOESN'T DROP

1. You must operate dispenser several times When you first use it.
2. The liquid will congealed in winter, you need fill in some warm water (about 60°C), after several minutes than operate it.
3. Perhaps no liquid.

### CLEANING

1. If there has dust in the container, please clean the container than refill in the liquid.
2. Do not use water to wash the dispenser, clean the surface use wet towel; use dry towel to clean the battery compartment.
3. If you no use, please fill in some water, than operate dispenser several times to cleaning the output pipe and take out the battery.
4. If liquid was congealed, fill in some warm water, wait few minutes, than operate dispenser and push out the water.