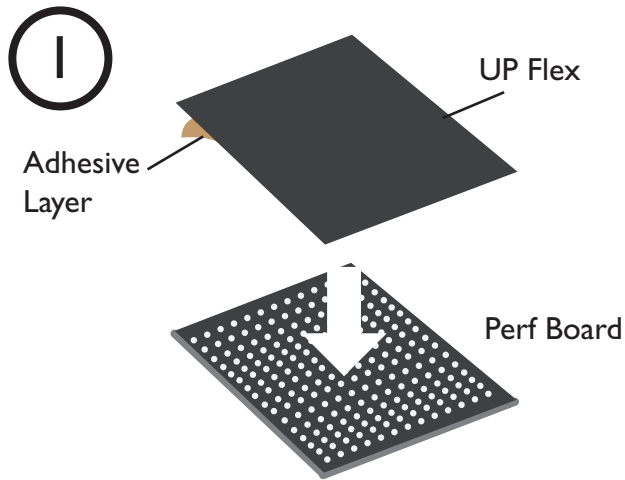


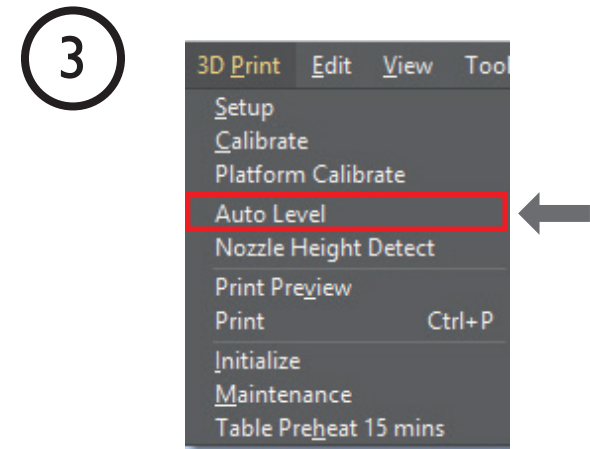
# UP Flex User Guide Version 1.0



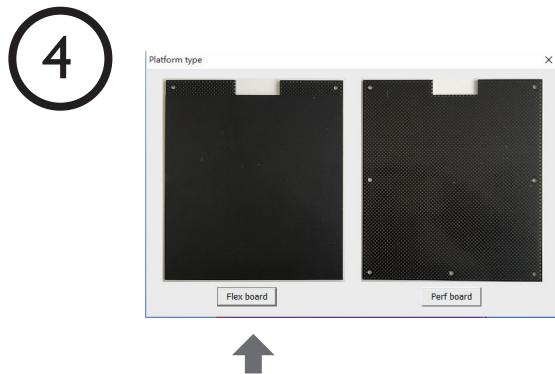
Stick the UP Flex onto a Perf Board.  
(Skip to Step 2 if using a ready-to-use UP Flex print board)



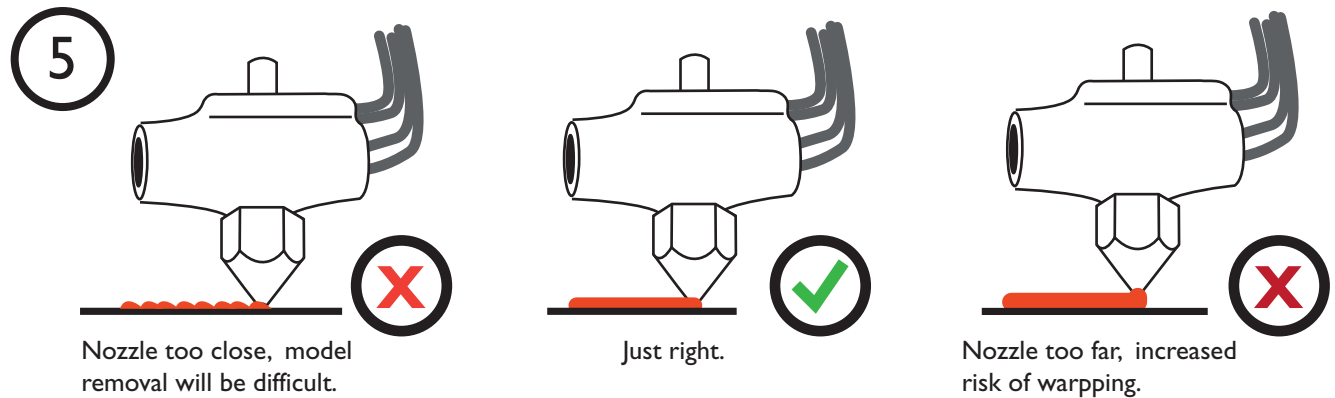
Clean the surface of UP Flex print board to remove any grease and dust.



Install the UP Flex print board on the build platform, start the Auto Level function.  
**Require UP Software 2.18 or later.**



At the end of the auto leveling, choose Flex Board as the platform type.



Make a test print, see how the raft is sticking to the surface. If the raft is sticking too well or too loose, adjust the nozzle height value manually at maintenance or print confirmation window.

**●** Tips: For improved adhesion, preheat the platform and reduce nozzle cooling during printing of the raft.